

## InfraDev Cost Estimate

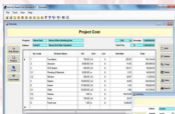
InfraDev Cost Estimates provides functionality to build accurate and consistent Cost Model utilizing proven Activity Based Management Principle in fulfilling the needs of : Project owner, Manufacturer, Developer, Contractor, Quantity Surveyor, Budget Planner and Cost Engineer to develop: Project Cost Estimate, Product Cost Estimate, Owner Estimate, Project Budget, Bill of Quantity.

**Cost Model** can be use to match Estimate with allocated Budget following Prescribed Productivity and Estimating Criteria. In addition, quantity of allocated can be generated to include Material, Man Power, Equipment, etc.



InfraDev Cost Estimate provide user-friendly Unit rate Standard Management Function to accommodate estimating schemes or scenario following specific estimating which are unique characteristic of project, such as geographic location, specification, complexity of implementation technology, quality of implementation, validity of estimating period.

**Cost Estimate** can be developed and update with Reference to Pre-established Unit Rate Standard.



# InfraDev Cost Estimate

## COST ESTIMATE FEATURES

- Project Structure can maintain multiple Project Cost Estimate Editions.
- Multi currency within one database is allowed.
- Work Division is definable using ten-character code.
- Roll up functionality to SUs the value to higher level Work Division.
- Generate Bill of Material, Man Power, Equipment, etc.
- Match Estimate to allocated budget following prescribed control factors.
- Provide weight and average for each Work Division and each activity.
- Functionality to Group Projects into Project Structure.
- Save Project Cost Estimate as Assembly / Standard Cost Objects.
- Ability to compare up to five Estimating Schemes or Scenarios.

## UNIT RATE FEATURE

- Unit Rate Standard can maintain multiple Unit Rate Editions.
- Resource pool : Material, Man Power, Equipment, Subcontract, Field, others.
- RBS ( Resources Breakdown Structure) is definable using nine-character code.
- Allow Multi-Level Activity Unit Rate Analysis.
- Ability to develop Assembly / Standard Object Unit Rate.
- Resource Unit Rate can be adjusted globally either up or down.
- Estimating factors can be applied to adjust Resource Unit Rate.
- Productivity factors can be applied to adjust allocated Resource Quantity.

## GENERAL FEATURES

- Export Output to : Excel, Word, Text, RTF, HTML, PDF
- Import Resource & Activity Unit Rate, Analysis, and Project Cost Estimate from Excel file.
- Generate Graphics.
- Search Data using keyword supplied by Users.
- Flexible copy function that could extract Abc Cost Model consistency
- Access Control through User Administration Facility
- Export activity and resource data to Primavera Project Management.

## SYSTEM REQUIREMENTS

- Processor: Min. Core 2 Duo
- RAM: Min. 1 GB
- Windows 2000 SP 4, Windows XP SP 2, or Windows 7
- Microsoft Internet Explorer
- MSSQL Server 2000, MSSQL Server 2005 Express, or MSSQL Server 2008.
- Oracle 10g
- Min. Microsoft Office 2003

